

<b>Mar. 5</b>	Elmwood Ladies Fellowship meeting – 2:00 p.m. (Fleck Hall)
<b>6</b>	Ash Wednesday – Worship service 7:00 p.m.
<b>10</b>	Holly Communion – First Sunday in Lent
<b>12</b>	Dream Group – 4:00 p.m. (Campbell Room)
<b>13</b>	Session – 7:30 p.m. (Fleck Hall)
<b>17</b>	Food Bank Sunday
	<i>Hark the Herald</i> - submissions deadline

৯ ৯



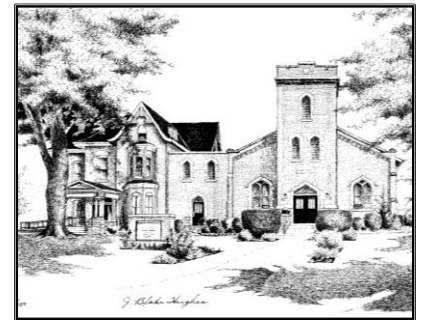
*PWS&D ensures health, education and safety for women*



ඌ ඌ

*Session \* Stewardship and Outreach \* Work & Worship*

Website: [www.elmwoodchurch.ca](http://www.elmwoodchurch.ca)



*If able, please stand where indicated with an \* asterisk.*

## “Gloria” by Antonio Vivaldi

1. **Gloria in Excelsis** – *Glory be to God on high*
2. **Et in Terra Pax** – *And on earth peace to men of good will*

3. **Laudamus Te** – *We praise Thee. We bless Thee. We adore Thee. We glorify Thee.*  
Soloists: Linda Hubert and Stephanie O'Leary
4. **Gratias Agimus Tibi** – *We give thanks unto Thee.*
5. **Propter Magnam Gloriam** – *We give thanks to Thee for Thy great glory.*
6. **Domine Deus** – *O Lord God, heavenly King, God the Father almighty.*  
Soloist: Linda Hubert
7. **Domine Fili Unigenite** – *O Lord the only begotten Son, Jesus Christ*
8. **Domine Deus, Agnus Dei** – *O Lord God, Lamb of God, Son of the Father, Who takest away the sins of the world, have mercy on us.*  
Soloist: Alistair McGhee
9. **Qui Tollis** – *Who takest away the sins of the world, receive our prayer.*
10. **Qui Sedes ad dexteram** – *Who sittest at the right hand of the Father, have mercy on us.*  
Soloist: Stephanie O'Leary
11. **Quoniam Tu Solus Sanctus** – *For Thou art holy, Thou only art the Lord. Thou only art most high, O Jesus Christ*
12. **Cum Sancto Spiritu** – *With the Holy Ghost in the glory of God the Father.*  
Amen.

Offering of our Gifts in Response

Organ Offertory: Allegro John Bennett (1735 -1784)

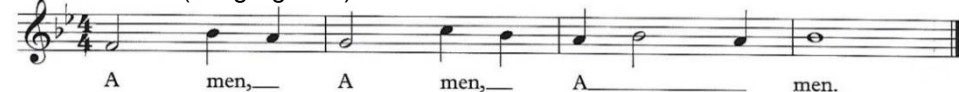
\*Doxology: Praise God from whom all blessings flow # 830

\*Prayer of Dedication

\*Hymn: **When morning gilds the skies** # 438

\*Commissioning and Benediction

\*Choral Amen (congregation) Bert Van der Hoek



Organ Postlude: Prelude in C Major J.S. Bach



**Welcome Visitors!** - Thank you for worshipping with us today, at Elmwood Avenue Presbyterian Church. You have enriched our community and we hope the service held meaning and beauty for you. **Please feel free to remain after the worship service for Coffee Hour in Fleck Hall.** You may wish to visit us on the web at [www.elmwoodchurch.ca](http://www.elmwoodchurch.ca) to learn more about us and what opportunities are available for personal spiritual growth and service to others. If you are not an involved member of a faith community, but seeking one, we invite you to return here any Sunday for worship and fellowship.

If you would like to speak to the minister, or have him visit, you are very welcome to be in touch with him. Please contact the church office 519-438-3492



**Antonio Vivaldi** (1678 – 1741) was an Italian Baroque composer who has earned considerable popularity today. However, this was not always the case. During his lifetime, he enjoyed real success, but it wasn't until the early 1960's that his music once again enjoyed widespread popularity.

Vivaldi's Gloria is one of sacred music's most uplifting choral works. It is a joyful hymn of praise and worship long connected to the church. Along with the Four Seasons, it is one of Vivaldi's best known works. Its' wonderfully sunny nature with its' distinctive melodies and rhythms illuminates the glory and majesty of God for us all.



Thank you to the Choir, Paul Merritt, Sig Martin, Maddie Speller, Karen Kjeldson, Lac-Hong Phi and Stephanie O'Leary for their presentation of the Vivaldi Gloria this morning.



The flowers in the sanctuary this morning have been placed by Molly Niamath along with Roger, Tony & Oxana, to the glory of God and in loving memory of Bob Niamath.



**Stewardship Moment** – A generous person will be enriched, and one who gives water will get water. *Proverbs 11:25*

## FOR YOUR INFORMATION

❖ **Play Area** for children aged 0 – 7 yrs. during the worship service. An usher can direct you there. Please make the necessary arrangements for your children's supervision. Thank you.

❖ **Elmwood Ladies Fellowship – meeting March 5, 2:00 p.m.** All ladies welcome. Guest speaker will be Carolyn Smale, Director of Volunteer Services at Anova. Please remember your goodies, just a few and Rotholme with toiletries.

❖ **Annual Dinner & Auction - Saturday, April 13<sup>th</sup>** at 5:00 p.m. On the menu is ham, scalloped potatoes and all the fixin's and assorted homemade desserts. Sure to be delicious! Please pick up auction sheets from the office or they will be available in the Narthex. When they're completed, you can give it to either Des Perry, Dianne Walker or leave it in the office with Karen. It's so much fun and any donation for the auction will be appreciated. Mark your calendars for our fun-filled evening.

*Dianne Walker, Board of Managers*

❖ **Hark The Herald** - Spring Edition deadline for contributions March 17<sup>th</sup>. Please send items to church office or put in mailbox E15.

❖ **Listen Again:** You can hear recordings of the latest sermons on our website. Visit [www.elmwoodchurch.ca/media](http://www.elmwoodchurch.ca/media)



**AGM** is scheduled for **March 9<sup>th</sup>** at the Landon Library to begin at 10:00 a.m. Reminder, yearly memberships (2019) are now due for renewal. You must be a current member to vote.